

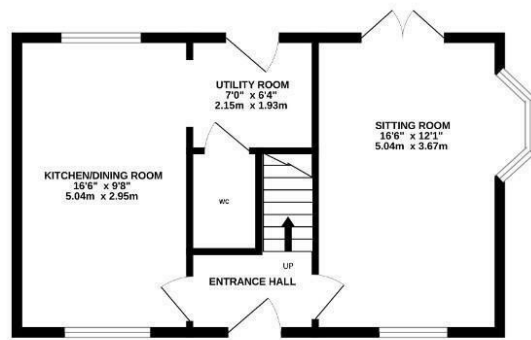


3 Milburn Drive
St. Crispin, Northampton

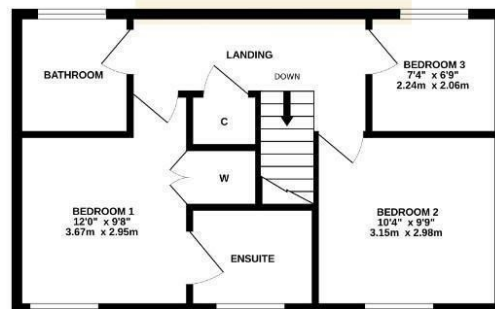
oriordanbond
SALES & LETTINGS



GROUND FLOOR



oriordanbond
SALES & LETTINGS



TOTAL FLOOR AREA : 902 sq.ft. (83.8 sq.m.) approx.

While every attempt has been made to ensure the accuracy of the floor plan contained here, measurements of doors, windows, rooms and any other items are approximate and no responsibility is taken for any error, omission or mis-statement. This plan is for illustrative purposes only and should be used as such by any prospective purchaser. The services, systems and appliances shown have not been tested and no guarantee as to their operability or efficiency can be given.
Made with Metrepro CS223

3 Milburn Drive

St. Crispin

NN5 4UH

OFFERS OVER

£200,000

A modern three bedroom semi-detached family home situated in the highly desirable area of St. Crispin, located within close proximity of local schools and amenities within St. Crispin Retail Village.

The property is presented to a wonderful standard throughout and comprises entrance hall, sitting room, kitchen/dining room with fitted appliances, utility room and cloakroom/WC. The first floor offers three bedrooms with fitted wardrobes and en-suite to the master and a family bathroom. Outside is a front garden with driveway to side providing off road parking leading to a single garage. To the rear is a well maintained enclosed garden with lawn and patio areas. Further benefits include uPVC double glazing and gas radiator heating. (A/902/M)

Additional information

- Council Tax Band: D
- Energy Efficiency Rating: C

Viewing

Viewing strictly by appointment – details below

Disclaimer

O'Riordan Bond Estate Agents Limited has not tested apparatus, equipment, fittings or services and so cannot verify they are in working order. The buyer is advised to obtain verification from their solicitor or surveyor.

O'Riordan Bond Duston Sales

01604 589007

duston@oriordanbond.co.uk

